

Instructions

This product mainly uses artificial board as base material and natural wood veneer overlaying the surface finishing. Some of the lines and the framework use solid wood processing and hardware for connection and for overall plate structures. This product meets the standard GB/T 3324-2008, which defines 16 ± 1% (Hangzhou) wood water content, formaldehyde release quantity to 1.5 mg/L, or less soluble heavy metals (paint) limited in accordance with national standards.

This is the product manual. Please read it carefully before using the furniture. When using and maintaining the product correctly, it will last for many years to come.

- Do not put furniture directly to sun, air conditioner or close to a heating radiator. This may cause color changes and the paint may fall off and it can also lead to deformation of furniture.
- High temperature or frozen items should not be placed directly on the furniture, because at a certain temperature it can cause surface discoloration, leaving permanent traces. • Don't tilt furniture in any direction, or it will cause furniture components loose and even broken.
- Should you put heavier or harder objects on the furniture, we advice you to use a soft cloth mat on the surface for the purpose of protection.
- Don't move items directly on the furniture, which can scratch the surface, and also needed to avoid sharp objects on the surface of the furniture scratch.
- When you need to move furniture, please move slightly off the ground.
- Do not use plastic or rubber items for a long time in direct contact with the surface of the furniture. The chemical composition may cause damage.
- When eliminating smoke oil and other pollution traces, please use cleanser for exclusive furniture. Be sure not to use chemical cleanser or acid liquid to clean.
- When not in use for a longer period, cover with dust cover, storage indoor in a dry ventilated environment and avoid light.

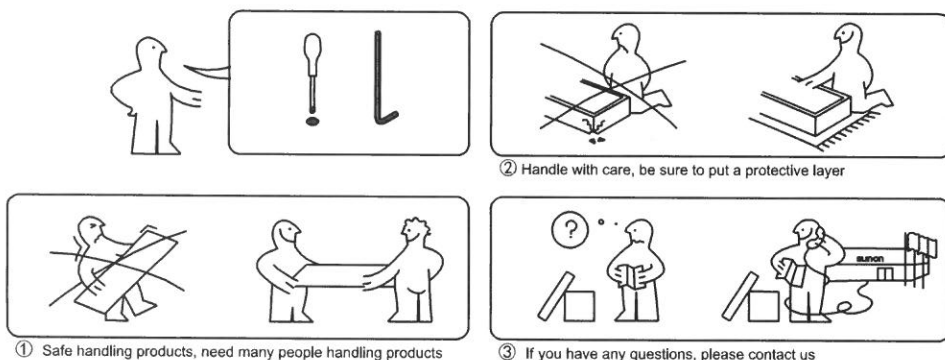
Trouble shooting

Problems	Anyllasis	Solutions
Hinge is loose	Fixed screw is loose	Tighten the screws
Door cannot be opened smoothly	Furniture is not horizontal or problem with hinges	Put furniture horizontal or adjust hinges
Drawer cannot be opened smoothly Overloaded	Overloaded, resulting in lack of lubricating oil	Cut down the weight and add some lubricate oil on rails
Desktop Whitening	Due to high temperature	Use a wet towel to cover the white place until the color has recovered
Connector is loose	Eccentric connect part is loose	Tighten
Shelf distort	Overloaded	Reduce the weight

Assembly instructions

- Before installation, make sure where you place your furniture, in order to avoid moving furniture after completing the installation.
- Do not put furniture in extreme conditions such as damp and hot environment.
- Check the objects in the product packing bag according to the packing list. See the figure of the product and deterine product part structure.
- After unpacking the products, determine the left and right sides of the product as well as the directions up and down before installation.
- Be careful during installation. The installation of the furniture is very easy but you need patience.
- After installation, please check the stability of the furniture. You can gently shake it to confirm whether the furniture and floor are horizontal and screws are tight.
- Before usage, we recommend you to open the drawers and sealing doors for a while in order to eliminate the odor residues in surface coatings.

Attention



Q/SAYF-BD051V1.0

Sunon 圣奥

First of all to thanks for purchasing Sunon's products
Please pay attention to read the manual before using our products.



Operation Introduction

Introduction

Series: Mandis
Item No.: DM71
Item Name: Training Table
Size: 1200/1400/1500/1600*500/550/600*750

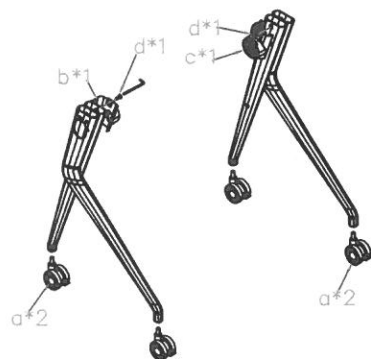
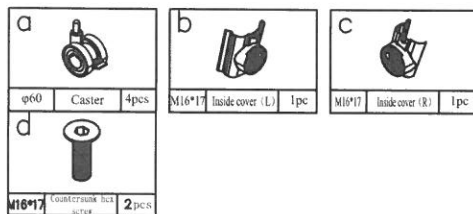
Our products are designed for office, interior

Zhejiang Sunon Furniture Manufacture Co.,Ltd

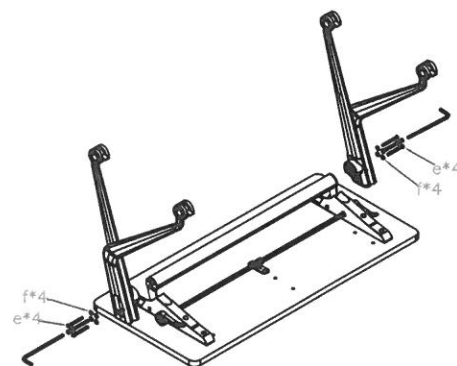
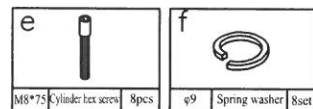
Customer service hotline: 4008-600-666
Website: www.sunon-china.com
Headquarter Address: Citizen Street, SUNON Central Mansion,
Qianjiang CBD, Hangzhou, Zhejiang
Production Base Address: 35th, Ningdong Road, Xiaoshan economic
and technological development zone, Hangzhou, Zhejiang
Production Base Address: 6th Anren Road, Jianshan Haining economic
development zone, Zhejiang

李明 2016.2.3
吴小明 2016.2.3

Step 1: Install caster and inside cover



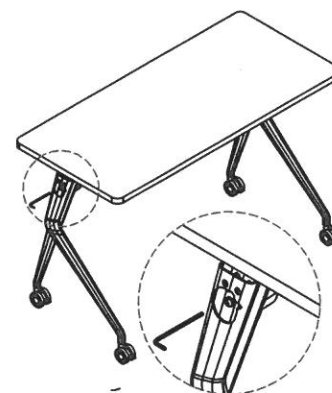
Step 2: Install leg



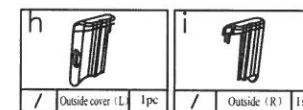
Step 3: Adjust the level of desktop

Note:

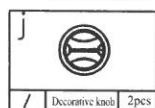
1. Check the reliable connection of screw, and then turn the desktop over.
2. Adjust the height of 4 casters, and confirm the height from desktop to floor is 750mm



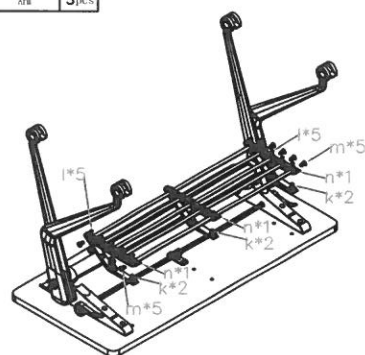
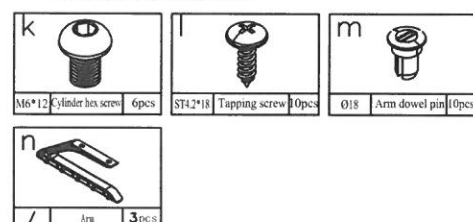
Step 4: Install outside cover



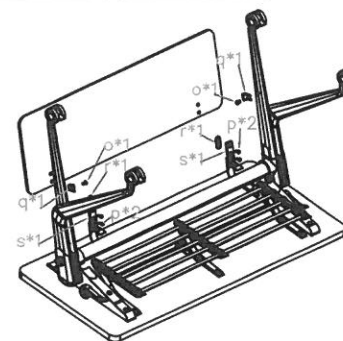
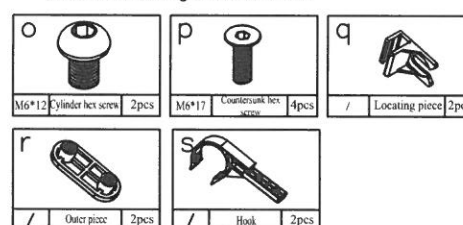
Step 5: Install decorative knob



Alternative shelf installation



Alternative skirting board installation



Finished picture with high-end accessories



2016.2.3